



Stadiometer

570-0606



Table of Contents

- Safety Cautionary Information2
- Important Information2
- Before you start2
- Installation4
- Height Rod Operation4
- Technical Data5
- Technical Support6
- Warranty6

Safety Cautionary Information

Before using your new Stadiometer, please take time to read the following safety instructions.

CAUTION! Properly assemble scale and follow all directions in the user manual.

CAUTION! Use the assembly material supplied

CAUTION! Ensure that screws are tightened

CAUTION! Make sure to fold down the height lever after measurement has been take

Important Information

- Have repairs carried out only by authorized persons.

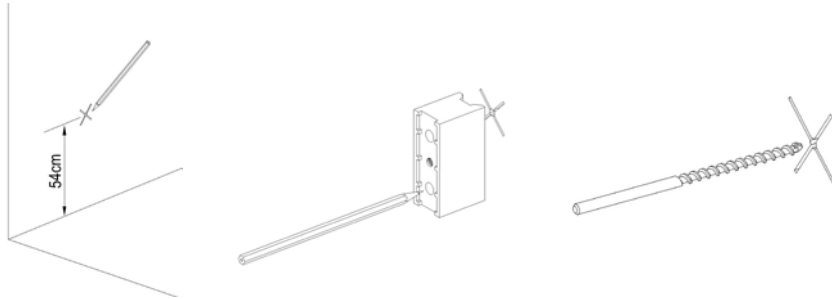
Before you start

Carefully remove the stadiometer from the shipping carton. If you notice any shipping damage to the product, please contact the shipper immediately. Please retain all shipping material in case the product needs to be returned or the scale needs to be shipped to another location.

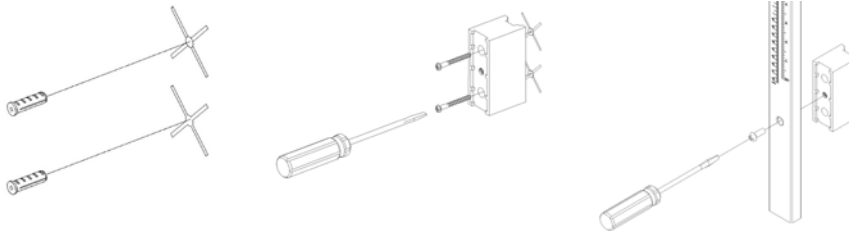
Remove the packaging and place the scale on a firm, level surface. Contents include:

- Height Rod
- Anchor screws
- Metal screws
- Bracket

Installation



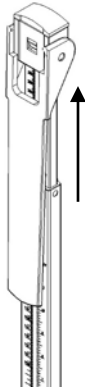
Markings will need to be made so the height rod is properly installed. Make a cross at 54cm off the ground. Take your bracket and align the top hole with the first marking and then take a pencil and put through the bottom hole until the tip touches the wall to make the 2nd mark. When both markings are in place begin drilling through both markings.



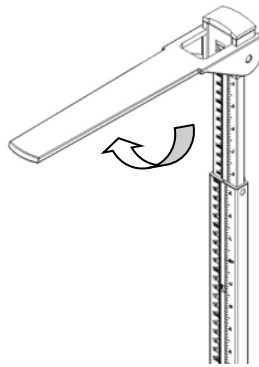
Insert the anchor screws to the wall. Note: You may need to adjust the hole size by using a drill bit. Screw bracket to the wall. Screw the height rod on the bracket through the middle hole. (Refer to drawing)

Height Rod Operation

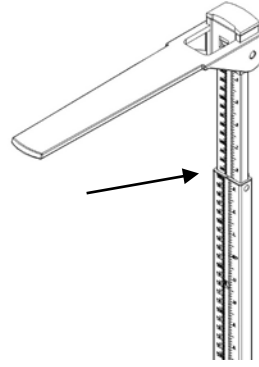
Measuring over 51 inches



Picture 1



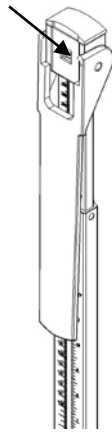
Picture 2



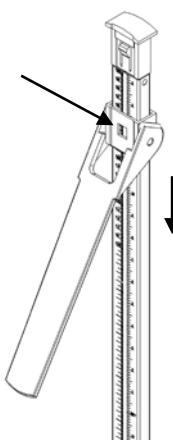
Picture 3

- 1.) Engage height rod by pulling up on the top rod as noted in Picture 1
- 2.) Flip the height rod lever up so that it is in a horizontal position as shown in Picture 2
- 3.) Adjust the height rod lever by lowering until it touches the top of the patients head
- 4.) Measurement can be read by the Red marking as shown in Picture 3

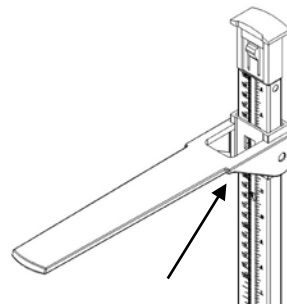
Measuring under 51 inches



Picture 4



Picture 5



Picture 6

- With the height rod lever flipped down, begin to slide the height rod downward until it stops
- 1.) Press the release button that is found on the front of the height rod lever bracket. Refer to Picture 5. When pressing the release button, begin to slide the height rod lever down as shown in Picture 5 and 6
 - 2.) Measurement can be read by the Red marking as shown in Picture 6

Technical Data

Item #	570-0606
Range of measurement	2ft to 6ft 6.75 inches
Division	21.6 x 308.6 x 13.4 inches
Weight	1.54 lbs

Technical Support

For further information, contact our service department at:

1-888-392-8492

Distributed by (in US only):
HENRY SCHEIN INC.
135 DURYEY ROAD
MELVILLE, NY 11747 USA

Made in China



Consult instructions for use



Contains No Natural Latex

Warranty

A two-year warranty from date of delivery applies to defects attributable to poor materials or workmanship. All moveable parts - batteries, rechargeable batteries etc. - are excluded. Defects which come under warranty will be made good for the customer at no charge on production of the receipt. No further claims can be entertained. The costs of transport in both directions will be borne by the customer should the equipment be located anywhere other than the customer's premises. In the event of transport damage, claims under warranty can be honored only if the complete original packaging was used for any transport and the scale secured and attached in that packaging just as it was when originally packed. All the packaging should therefore be retained.

A claim under warranty will not be honored if the product is opened by persons not authorized by Henry Schein, Inc.

Henry Schein scales' liability under this warranty is limited to the repair or replacement of the defective product and in no event, be liable for consequential or indirect damages to equipment or personnel.

Rev. Date 2017/04